



Shikamaal Complex



GROUND FLOOR PLAN



COMMERCIAL PARKING



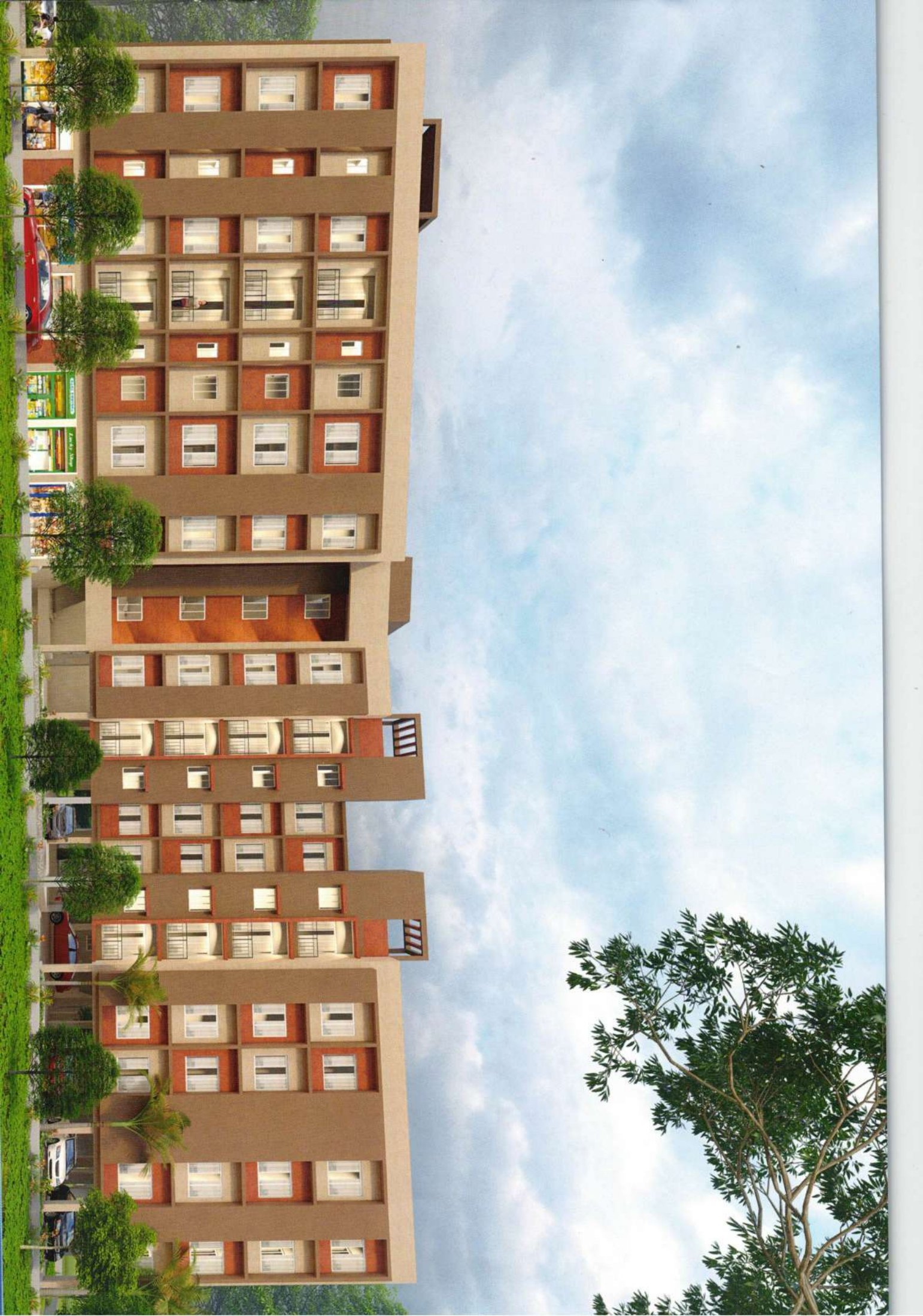
TYPICAL FLOOR PLAN

2 BHK FLATS 3 BHK FLATS





NILKAMAL COMPLEX



- 1 LIVING 9' X 8'
- 2 DINING 15' X 7'-2"
- 3 KITCHEN 5'-6" X 7'-6"
- 4 BEDROOM 1 12' X 10'-3"
- 5 BEDROOM 2 11'-6" X 10'
- 6 BALCONY 6'-8" X 4'-7"
- 7 COM. TOILET 7'-6" X 4'
- 8 ATT. TOILET 5' X 4'



KEY PLAN

640 BUA (SQFT)
 09 CB (SQFT)
 809 SBUA (SQFT)

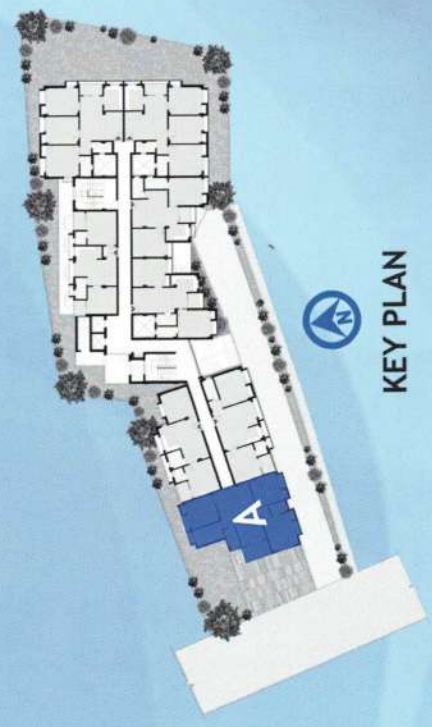
FLAT - B
 2BHK - 2TOI



- 1 LIVING 10'-5" X 13'
- 2 DINING 11' X 9'-2"
- 3 KITCHEN 6' X 10'-4"
- 4 BEDROOM 1 12' X 10'
- 5 BEDROOM 2 10' X 10'
- 6 BEDROOM 3 10' X 11'
- 7 BALCONY 5'-6" X 9'-6"
- 8 COM. TOILET 7'-6" X 4'
- 9 ATT. TOILET 4' X 6'

BUA (SQFT)	870
CB (SQFT)	22
SBUA (SQFT)	1110

FLAT - A
3BHK-2TOI



KEY PLAN

- 1 LIVING 9' X 8'
- 2 DINING 15' X 7'-2"
- 3 KITCHEN 5'-6" X 7'-6"
- 4 BEDROOM 1 12' X 10'-3"
- 5 BEDROOM 2 11'-6" X 10'
- 6 BALCONY 6'-8" X 4'-7"
- 7 COM. TOILET 7'-6" X 4'
- 8 ATT. TOILET 5' X 4'



KEY PLAN

640	BUA (SQFT)
09	CB (SQFT)
809	SBUA (SQFT)

FLAT - B
2BHK-2TOI



- 1 LIVING/DINING 15'-7" X 9'
- 2 KITCHEN 9'-3" X 5'-7"
- 3 BEDROOM 1 12' X 10'-3"
- 4 BEDROOM 2 10'-10" X 10'-4"
- 5 BALCONY 6'-8" X 4'-7"
- 6 COM. TOILET 6' X 5'-2"
- 7 ATT. TOILET 5' X 4'

BUA	(SQFT)	592
SBUA	(SQFT)	740

FLAT - C

2BHK-2TOI



KEY PLAN

- 1 LIVING/DINING 9'-4" X 15'
- 2 KITCHEN 6' X 9'-6"
- 3 BEDROOM 1 10' X 12'
- 4 BEDROOM 2 10' X 11'-9"
- 5 BALCONY 5'-6" X 4'
- 6 COM. TOILET 4' X 7'-2"
- 7 ATT. TOILET 4' X 7'-2"



KEY PLAN

640	BUA (SQFT)
07	CB (SQFT)
807	SBUA (SQFT)

FLAT - D
2BHK-2TOI



- 1 LIVING/DINING 12'-10" X 12'-10"
- 2 KITCHEN 6' X 8'-2"
- 3 BEDROOM 1 10' X 12'
- 4 BEDROOM 2 10'-6" X 11'-9"
- 5 BALCONY 5'-6" X 4'
- 6 COM. TOILET 7'-6" X 4'
- 7 ATT. TOILET 4' X 8'-3"

BUA (SAFT)	640
CB (SAFT)	07
SBUA (SAFT)	807

FLAT - E
2BHK-2TOI



 **KEY PLAN**



- 1 LIVING 10'-5" X 15'
- 2 DINING 9' X 8'-2"
- 3 KITCHEN 9' X 6'-10"
- 4 BEDROOM 1 11'-3" X 12'
- 5 BEDROOM 2 10' X 12'
- 6 BEDROOM 3 10' X 12'
- 7 BALCONY 4' X 8'-2"
- 8 COM. TOILET 4' X 7'
- 9 ATT. TOILET 7'-5" X 4'

BUA (SQFT)	856
CB (SQFT)	23
SBUA (SQFT)	1093

FLAT - F
3BHK-2TOI



KEY PLAN

- 1 LIVING 10'-5" X 15'
- 2 DINING 9' X 8'-2"
- 3 KITCHEN 9' X 6'-10"
- 4 BEDROOM 1 11'-3" X 12'
- 5 BEDROOM 2 10' X 12'
- 6 BEDROOM 3 10' X 12'
- 7 BALCONY 4' X 8'-2"
- 8 COM. TOILET 4' X 7'
- 9 ATT. TOILET 7'-5" X 4'



KEY PLAN



BUA (SQFT) 860
 CB (SQFT) 23
 SBUA (SQFT) 1098

3BHK - 2TOI

FLAT - G



Artist's Impression



Artist's Impression



Artist's Impression



Artist's Impression

FOUNDATION

RCC Foundation

SUPERSTRUCTURE

RCC Framed Structure

WALLS

Red Brick Masonry

EXTERNAL FINISH

Finished with Weather-Coat Paints of Reputed Brand

ROOMS

Floor
Ceramic Tiles / Vitrified Tiles

Wall
Putty over Plaster / Gypsum Plaster

KITCHEN

Floor
Ceramic Tiles / Vitrified Tiles

Dado
Ceramic Tiles (upto 2' above counter)

Counter
Black Stone Platform

Sink
Stainless Steel Sink

TOILETS

Floor
Anti-Skid Tiles

Dado
Tiles (upto 7' height)

WC

Wash Basin
Paryyware / Hindware or Equivalent Make

DOORS

Main Door
Decorative Laminated Door

Inside Door
Commercial Flush Door

Toilet Door
PVC

WINDOWS

ELECTRICAL

Wiring
Concealed Copper Wiring

Switch Board
Modular Switches of Reputed Brand with ISI Marked

LIFT

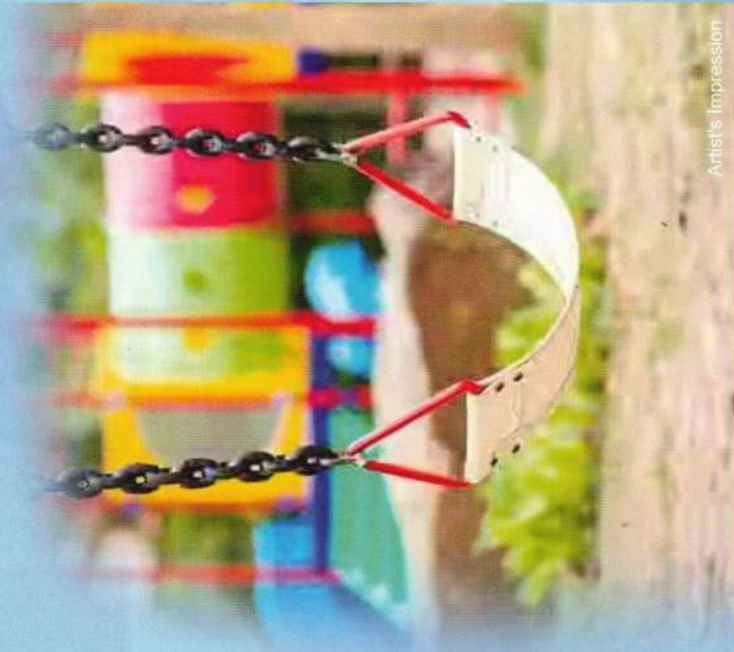
6 Passenger Lift of Reputed Brand

STAIRCASE

Finish with Stone / IPS

COMMON LOBBY

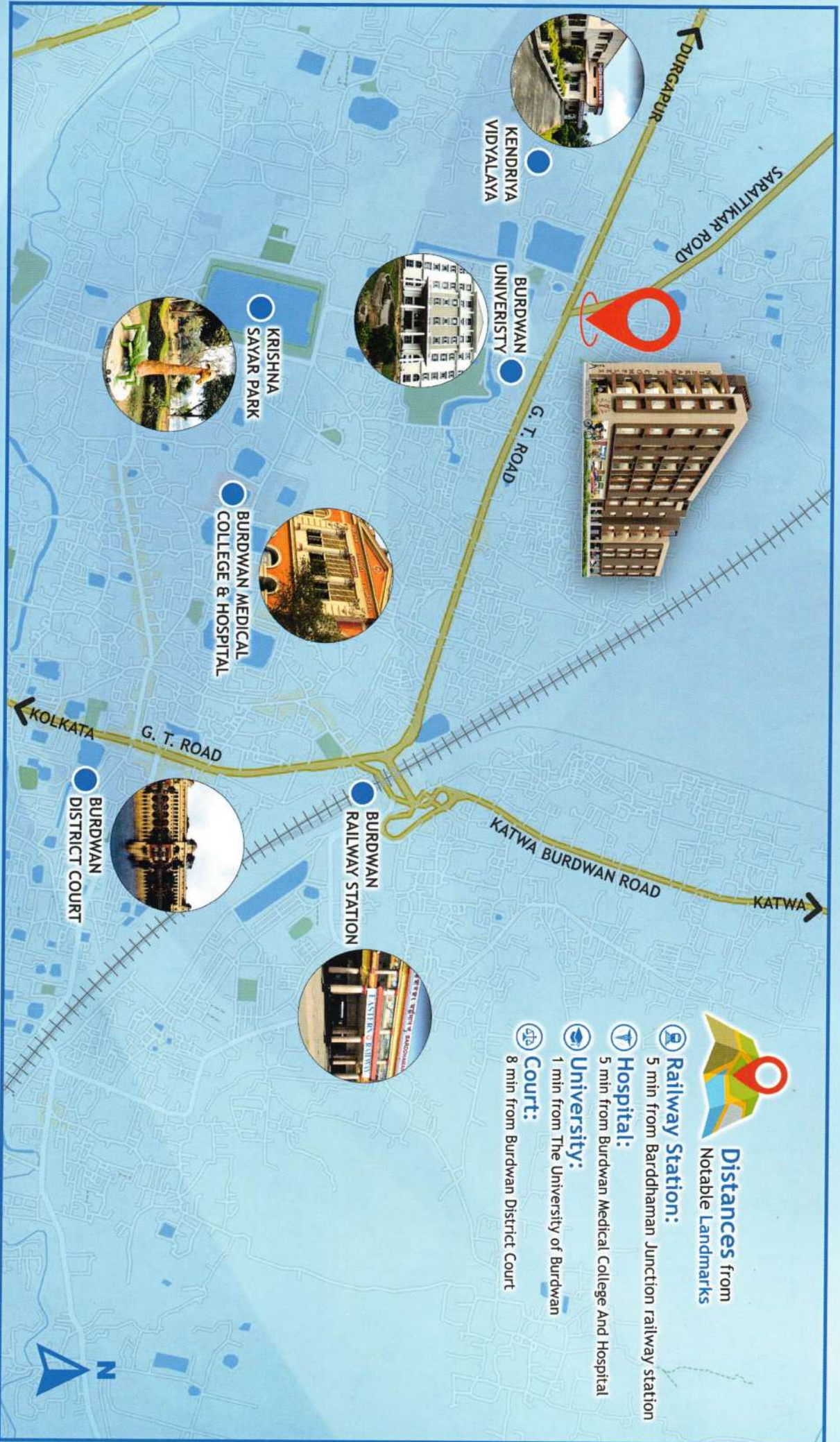
Finish with Stone / Tiles



Artist's Impression

SPECIFICATION

LOCATION PLAN



For Booking Call :
8436547227, 9339964524

RERA Applicable

Project Address :

NILKAMAL COMPLEX
Amtala, Saraitikar Road,
Burdwan, Pin - 713104

Developer :

Samima Construction Pvt. Ltd.

Architect :

 **STHA** 9830650141
www.stha-architects.com

This is not a legal document or a legal offering. It only describes the conceptual plan, intent and purpose of this project.
The developer reserved all the rights to change the layout and specifications without prior notice.